



Whirinaki
Whare Taonga

ARTS | CULTURE | EVENTS

Venue Hire





Contents

Introduction	1
Theatre	3
Recreation Hall	7
Green Room	10
Creative Classroom	11
Recreation Hall Foyer	12
Commercial Kitchen	13
Court	14
Foyer	15
Dough Bakery	17
Packages	19

Introducing Whirinaki Whare Taonga

Whirinaki Whare Taonga is an award-winning arts, culture and events centre based in Te Awakairangi ki Uta / Upper Hutt and is a spectacular venue for a memorable daytime or evening event.

With a striking three-level glass facade fronting a magnificent interior space, state of the art sophisticated theatre, large civic hall, unique meeting rooms and fully equipped commercial kitchen, together with an ever-changing suite of contemporary eye-catching exhibitions, Whirinaki is a sophisticated and inspiring venue for any event.

Our impressive spaces have been designed to be flexible and are perfect for performances, corporate events, lectures and conferences, cocktail parties, weddings, seated dinners, intimate meetings as well as sporting events and public expos.

Host your guests surrounded by eye-catching, contemporary New Zealand and international artworks in an architectural space which oozes charm and drama.



We offer a range of venue hire options at competitive prices - from the intimate spaces of the foyer to the generous civic hall and theatre to private exhibition viewings. At Whirinaki you can use our on-site caterer Dough Bakery, choose your own caterer, or cater your own event making it flexible for commercial and community events.

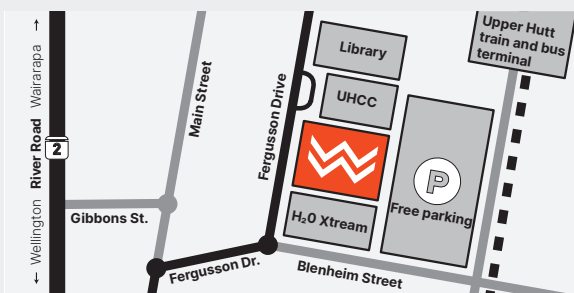
With rail links right on the doorstep direct from Wellington CBD or thirty minutes' drive from the central city and an easy stroll from the region's premiere entertainment precinct Brewtown, Whirinaki is uniquely situated to serve your conferences, expos and social events.

Our dedicated team can support you make your event the best it can be. Home to the Upper Hutt i-site our team can also provide logistic insights into any and all transport, accommodation or leisure activities associated to your event.

LOCATION

Whirinaki is situated in the heart of Upper Hutt's Civic and Cultural Precinct, right next door to H2O Xtreme and Upper Hutt City Council buildings.

We are just a short trip from Wellington central at 836 Fergusson Drive, Upper Hutt or a five-minute walk from the railway station and on the main bus route.



BOOKING

To enquire about venue availability and arrange a site visit, please call or email.

T 05 527 2168 / 021 328 508

E bookings@whirinakiarts.org.nz

W whirinakiarts.org.nz

ALCOHOL

Please note clients are required to either apply for a special licence with Upper Hutt District Licensing committee or provide proof of the liquor licence of your caterer to the centre before you will be permitted to serve alcohol on site. If applying for a license you will need to allow at least 20 working days before your event. This is not a BYO venue.



Gillies Group Theatre

CAPACITY: 210

Our prestigious theatre allows great flexibility to accommodate everything from theatre performances, dance and ballet showcases, live bands, classical concerts, and seminars to product and programme launches.

Create a dramatic setting, for your awards presentation or gala dinner completed with traditional plush red house curtains or let your guests become the stars of the night by hosting directly on the spacious stage. Talk to us about the theatre for use as a development space for your production or put the spotlight on keynote speakers at your conferences.

This state-of-the-art theatre can seat up an audience of up to 210 in a tiered setting and features a large wooden sprung stage floor. Your booking also comes with the support of fully fitted backstage changing rooms and green room as well as access to The Gibbs Sculpture Court, an indoor-outdoor lobby with the best views over the valley.

The Gillies Group Theatre is also home of a Steinway Model D 9ft concert grand piano, one of the few in the country. An intimate space with natural acoustics as well as the latest audio, visual and traditional theatre lighting technology and a skilled team of in-house technicians, this theatre has everything to offer your event, with a touch of glamour.

PROUDLY SPONSORED BY THE GILLIES GROUP

WHIRINAKI WHARE TAONGA — VENUE HIRE



*dramatic &
deluxe*

HOW THE THEATRE IS HIRED

The theatre is hired as a managed venue. We provide the space, a Front of House Manager and a Technician to manage the theatre, as well as ticketing services, cashier's and ushers. Included in your hire is a Technician who oversees the venue and works with you to achieve your audio-visual requirements. This includes the use of a pre-focused and set-up standard lighting rig and the use of the standard Line Array Sound System.

INCLUDED

- A FOH Manager
- A Technical Supervisor for 5/10/15 hours for Lighting OR Sound
- Full use of green rooms and dressing rooms
- Use of a pre-focused and set-up standard lighting rig
- Use of standard Line Array Sound System and a single cabled microphone stand mounted
- If speciality rigging/sound is required then pricing is on application
- Genie hoist (approved operators only)
- Lectern
- Freight lift access to the theatre
- Sound loop for the hearing impaired
- Boston upright practice piano
- Stage relay to green room and backstage

CAPACITY

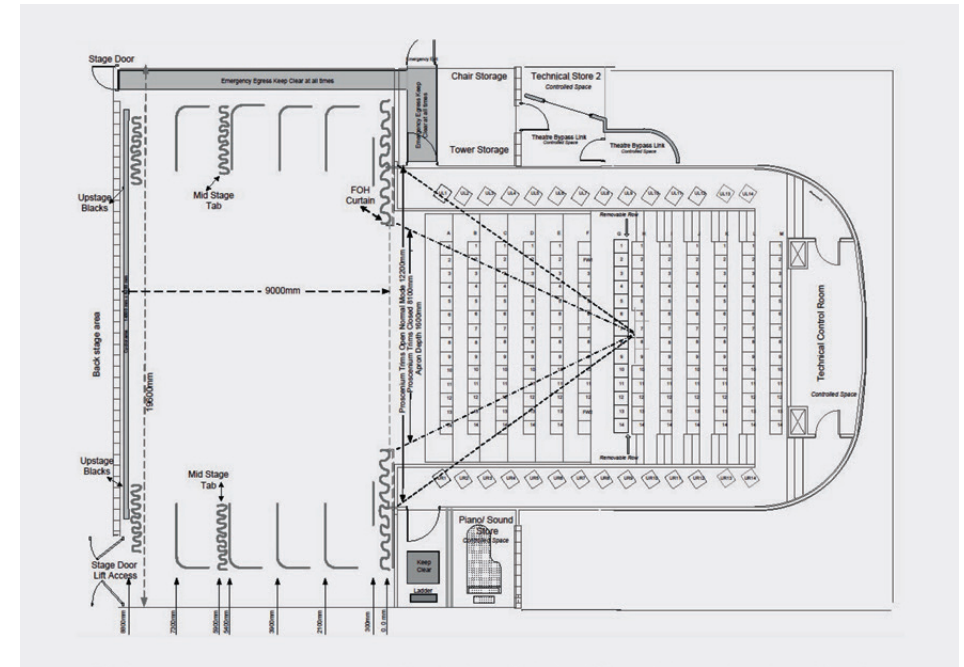
- 210 seated

STAGE DIMENSIONS

- 19.5m width stage and wings
- 12.3m wide proscenium
- 8.1m closed proscenium
- 11.1m front to rear stage
- 5.2 m from stage to grid
- No fly tower

AVAILABLE TO HIRE

- Additional technician if you require BOTH sound and lighting
- Theatre video projector (please supply own laptop)
12000 ANSI LUMEN LASER
- Roland Vision mixer
- Follow spot
- Smoke machine
- Specialty lighting/rigging (pricing on application)



Sound & Lighting Equipment

SOUND EQUIPMENT

GENERAL

- [7x] Line array speakers
RCF HDL-20A, 3 FLOWN EACH SIDE OF THE PROS ARCH – INSTALLED WITH ONE SINGLE CABINET WITH SUMMED INPUT FOCUSED AS A LOW LEVEL CENTRE FILL FOR THE FIRST FEW ROWS OF THE THEATRE
- [2x] Active line array sub enclosures
RCF HDL-19, ONE FLOWN EACH SIDE OF THE PROS ARCH INSTALLED

STAGE SYSTEM

- [6x] Passive co-axial 2-way 12”
TURBOSOUND TFM-122M, 60° H x 40° V, LOW PROFILE
- [3x] Power Amp
LAB GRUPPEN IPD-2400, 1200W @ 4 OHMS, INSTALLED 2 CHANNEL
- [2x] Australian Monitor full range 12”
general stage fold back

MICROPHONES

- [5x] Green band and stand clips
AKG3800
- [3x] Black band and stand clips
AKG3800
- [5x] Shure Beta 58As and stand clips
- [5x] Shure SM57 and stand clips
- [1x] 7-piece Samson drum microphone kit
- [17x] K&M microphone boom stand
MODEL 210/9
- [4x] banquet stands with boom arms

STAGE ACCESSORIES

- [5x] Samson mono DI boxes
- [1x] Samson stereo DI box
- [1x] Utility stereo-input DI box
- [1x] Samson single-channel handheld radio microphone system
- Control room replay
- Stinger software spot player
facilitated on a Power PC Control room only
- Denon Professional CD player
- Tascam MiniDisc player
(NOT INSTALLED, BUT AVAILABLE)
- [2x] Matching Tascam CD media
players in single case for side stage use

LIGHTING EQUIPMENT

LIGHTING CONTROL

- Strand 300 Consul (default installed)
- Philips Neo Consul
- Strand Pallet 64 Consul
- Strand Classic Consul

LIGHTING INSTRUMENTS

- [4x] Ellipsoidal spots SOURCE 4, 70°, 750W
- [10x] Profile spots SELECON SPX, 800W
- [32x] Pebble convex SELECON PC, 1200W
- [27x] Fresnels SELECON SF, 1200W
- [18x] Fresnels STRAND 243, 2000W
- [9x] Profile spots SELECON SF 2000
- [15x] Profile spots STRAND SL, 600W, 23°/50°
- [10x] Profile spots STRAND SL, 600W, 15°/32°
- [6x] Gobo holders
- [120x] Dimmer channels 2kW
- [320x] Patchable production lighting
channels distributed theatre wide



Rates

	Commercial	Community 1	Community 2
5-hour session			
— Morning (8am–1pm)	\$425	\$250	\$200
— Afternoon (1pm–6pm)	\$580	\$325	\$280
— Evening (6pm–11pm)	\$605	\$380	\$345
10-hour session			
— Morning start (8am–6pm)	\$900	\$575	\$525
— Afternoon start (1pm–11pm)			
15-hour session			
— Full day/night (8am–11pm)	\$1150	\$770	\$670
Extra hours, after 11pm (per hour)	\$200	\$200	\$200
Pre-event set up day			
— Full day (9am–5pm)	\$195	\$195	\$195
— Extra hours after 5pm (per hour)	\$50	\$50	\$50
— Extra technician (per hour)	\$50	\$50	\$50
— Projector (per day)	\$250	\$250	\$250

- Commercial hire rate is for commercial business and events
- Community rates are for community groups or charitable trusts:
- Community 1: ticketed events
- Community 2: non-ticketed, free or by-donation events

- Please note**
- All prices are GST exclusive
 - If speciality rigging/sound is required then pricing is on application





Professionals Recreation Hall

CAPACITY: 500–750

With all the space you'll need and more, the Professionals Recreation Hall, with its generous 990m² sprung matai floor is the perfect location to cater to those larger events with up to 600 seating capacity.

This huge venue is a dry hire venue. We provide the space, and you provide or arrange everything else, perfect for community celebrations, weddings, conventions, dances or gala dinners and unique for your special expo or exhibition. Your guests can be welcomed either through the beautiful rear foyer or the main reception foyer and the hall can be themed to your liking. Please ask us for our picks for top notch theming, AV providers, DJs and bands or talk with us about a private viewing of our galleries as part of your event. We would love to work with you on finding the perfect additions to your gathering.

The Professionals Recreation Hall has easy load-in access and is supported by a servery/bar with the option of also booking a fully equipped commercial kitchen and the adjacent Creative Classroom for breakout/support space if required, or the theatre for your keynote speaker.

PROUDLY SPONSORED BY GILLIES & MARK PROFESSIONALS

HOW THE HALL IS HIRED

The hall is hired as a dry hire venue. We provide the space, and you provide or arrange everything else: i.e., caterers, audio visual services, setting up of tables and chairs etc. Included in your hire is a Venue Manager who hosts you, oversees the venue and health and safety, but does not run or set up or clean up after your event.

CAPACITY

- 750 standing
- 600 in rowed seating
- 500 at round tables

INCLUDED

- A Venue Manager during your event for up to 100 people*
- Use of the Recreation Hall Foyer
- Use of the Bar/Servery
- Complimentary wi-fi (unsecured network)
- Use of the stage (in situ)
- Use of rectangle tables and chairs
- Receipt of pre-event deliveries
- 27 coloured ceiling down lights and dimmable main room lights
- Public address system (6 zone) for voice announcements with two wireless microphones available
- [600x] plastic stacking chairs
- [40x] trestle tables at 180 x 75cm
- [20x] trestle tables at 240 x 75cm
- Lectern

DIMENSIONS

- **Hall:** 22.5m x 47.5m (D x W)
- **Stage:** 4.8m x 9.6m x 0.84m (D x W x H)

NOT INCLUDED

- (*) Events over 100 people will require additional staff (1 staff per 100 people) for fire and evacuation purposes at \$50 an hour
- Service staff to serve food, set up tables and chairs, and packing down

AVAILABLE TO HIRE

- Reconfiguration of the stage
- Draping the walls of the Recreation Hall with black fabric
- Projector and small pop-up screen
- [50x] black or white tablecloths

PACK DOWN

A compulsory pack down and cleaning crew is required for catered events over 100. This crew packs down tables and chairs, but does not remove tableware or decorations.



RUBBISH

You must removal all event rubbish.

CATERING

Yes, you can arrange your own catering! A compulsory cleaning crew and skip bin is compulsory for catered events over 100 people. You or your caterer need to provide service staff to serve food, set up tables and chairs, and pack down.

ALCOHOL

Please note clients are required to either apply for a special licence with Upper Hutt District Licensing committee or provide proof of the liquor licence of their caterer to the centre before they will be permitted to serve alcohol on site.

Rates

	Commercial	Community 1	Community 2
5-hour session			
— Morning (8am–1pm)	\$330	\$240	\$180
— Afternoon (1pm–6pm)	\$365	\$280	\$210
— Evening (6pm–11pm)	\$400	\$320	\$240
10-hour session			
— Morning start (8am–6pm)	\$635	\$460	\$345
— Afternoon start (1pm–11pm)	\$660	\$480	\$360
15-hour session			
— Full day (8am–11pm)	\$1045	\$760	\$570
Hourly (two-hour minimum)	\$80	\$44	\$33
Staffing			
— After hours staffing, after 11pm (hourly)	\$100	\$100	\$100
— Extra staff / security (hourly)	\$50	\$40	\$40
— Sound or lighting technicians (hourly)	\$50	\$50	\$50
— Pack down cleaning crew	\$550	\$550	\$550
COMPULSORY FOR CATERED EVENTS OVER 100			
Extras			
— Hall draping (optional)	\$400	\$400	\$400
— Skip bin COMPULSORY FOR LARGE CATERED EVENTS	\$250	\$250	\$250
— Moving stage	TBA	TBA	TBA
<p>■ Commercial hire rate is for commercial business and events</p> <p>Community rates are for community groups or charitable trusts:</p> <p>■ Community 1: ticketed events</p> <p>■ Community 2: non-ticketed, free or by-donation events</p>			
<p>Please note</p> <p>— All prices are GST exclusive</p>			



Green Room

CAPACITY: 20–50

The Green Room is a self-contained workshop space bookable for short or full day meetings, workshops and break-out activities.

This space seats 20 to 30 people around the board room table with views of the Upper Hutt hills. Please note: this area is up several flights of stairs and is not wheelchair accessible.

CAPACITY

- 20–30 seated
- 50 people informal standing

INCLUDED

- A Venue Manager during your event
- Boardroom table and chairs
- Complimentary wi-fi (unsecured network)
- AV projector and screen (please bring your own laptop)
- Kitchenette facilities with hot water and fridge
- Use of teacups
- Water and mints on table
- Whiteboard
- Conference stationery
- Rubbish removal

RATES

	Commercial	Community 1	Community 2
Hourly 8am–4pm, minimum 2 hours	\$50	\$40	\$30
Full-day rate	\$200	\$150	\$150

Please note: all prices are GST exclusive

■ **Commercial** hire rate is for commercial business and events

Community rates are for community groups or charitable trusts:

■ **Community 1:** ticketed events

■ **Community 2:** non-ticketed, free or by-donation events



HOW THE GREEN ROOM IS HIRED

The Green Room, when hired in isolation the theatre, is hired as a managed/serviced venue. We provide the space, and a Venue Manager who will set up your room for you and pack it down afterwards.



HOW THE CREATIVE CLASSROOM IS HIRED

The Creative Classroom is hired as a managed/serviced venue. We provide the space, and a Venue Manager who will set up your room for you and pack it down afterwards.

Creative Classroom

CAPACITY: 50

The Creative Classroom is a multipurpose, intimate meeting space.

It is available weekdays after 4pm, anytime in the school holidays, weekends and evenings. This space seats 30 to 40 people comfortably and is equipped with adjustable tables and chairs. This light and airy space features an integrated indoor and outdoor space and entrance and includes use of the Recreation Hall Foyer and the servery/bar. We can design our creative classroom around your meeting catering for 15 to 50 guests – with multiple configurations available. Combine your workshop or function with a tour through our galleries to create that unique event.

CAPACITY

- 50 people informal standing
- 40 seated

INCLUDED

- A Venue Manager during your event
- Classroom style tables and chairs
- Large 88-inch smart screen (please bring your own laptop)
- Complimentary wi-fi
- Servery/Bar facilities with hot water and fridge
- Use of glasses and teacups
- Water and mints on table
- Conference stationery
- Rubbish removal

RATES

	Commercial	Community 1	Community 2
Hourly After 4pm, min. 2 hrs	\$60	\$45	\$45
8-hour rate Available weekends and school holidays, 8am–4pm	\$400	\$250	\$200

Please note: all prices are GST exclusive

■ **Commercial** hire rate is for commercial business and events

Community rates are for community groups or charitable trusts:

■ **Community 1:** ticketed events

■ **Community 2:** non-ticketed, free or by-donation events

Professionals Recreation Hall Foyer

CAPACITY: 50

The Professionals Recreation Hall Foyer is a beautiful modern meeting space, featuring elegant red tiles and polished concrete floors.

Available weekdays after 4pm, any time in the school holidays, weekends and evenings, this space houses 50 people comfortably and is perfect for drinks and nibbles and intimate functions.

CAPACITY

- 50 people informal standing

INCLUDED

- A Venue Manager during your event
- Complimentary wi-fi
- Use of glasses and teacups
- Rubbish removal
- Servery/bar facilities, including hot water and fridge
- Glass-door chiller, single door
SKOPE TME650-A, 745 x 740 x (INCL. HANDLE)
x 2200mm (D x W x H)
- Under-counter bar fridge
FOUR SWING DOORS, SKOPE BB780X
590 x 2620 x 920mm (D x W x H)
- Trestle tables and chairs on request
- Lectern

RATES

	Commercial	Community 1	Community 2
Hourly After 4pm, min. 2 hrs	\$80	\$50	\$50
8-hour rate Available weekends and school holidays, 8am–4pm	\$400	\$250	\$200

Please note: all prices are GST exclusive

■ **Commercial** hire rate is for commercial business and events

Community rates are for community groups or charitable trusts:

■ **Community 1:** ticketed events

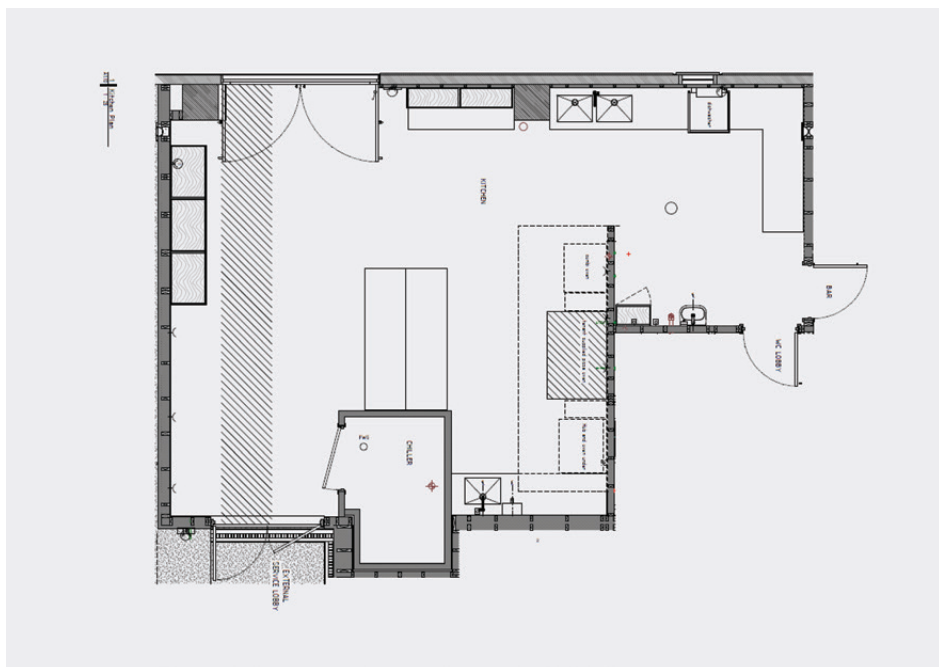
■ **Community 2:** non-ticketed, free or by-donation events

flexible & elegant



HOW THE HALL FOYER IS HIRED

The Hall Foyer is hired as a managed/serviced venue. We provide the space, and a Venue Manager who will set up your room for you and pack it down afterwards.



Commercial Kitchen

Our commercial kitchen features all the equipment you will need to cater your event.

Available for hire by caterers and hirers alike.

HOW THE COMMERCIAL KITCHEN IS HIRED

The Commercial Kitchen is hired as a dry venue. We provide the space, and you clean it up after your hire, including rubbish removal.

INCLUDED

- Pass-through dishwasher STARLINE M2C
- Tray digital/electric combi oven
TURBOFAN EC40D10 & SK40-10A FULL SIZE 10
- Gas range convection oven,
with cooktop
BLUE SEAL G56D, 812 x 900 x 915mm (D x W x H)
- Walk-in chiller
- [2x] stainless steel prep bench,
with shelf below
700 x 2400 x 900mm (D x W x H)

RATES

	Commercial	Community 1	Community 2
Flat rate 10-hour block	\$380	\$300	\$280

Please note: all prices are GST exclusive

■ **Commercial** hire rate is for commercial business and events

Community rates are for community groups or charitable trusts:

■ **Community 1:** ticketed events

■ **Community 2:** non-ticketed, free or by-donation events



HOW GIBBS COURT IS HIRED

Gibbs Court is hired as a managed/serviced venue. We provide the space, and a Venue Manager who will set up your room for you and pack it down afterwards. Dough Bakery our on-site eatery can easily provide food and alcohol services for you.

Gibbs Court

CAPACITY: 20–50

Our beautiful open air courtyard, on the first floor, provides one of the best views in Upper Hutt

Perfect for your summer evening rooftop experiences, social functions, meetings and work dos. This space has an intimate indoor area and large covered outdoor area creating fabulous indoor and outdoor flow. Our licensed café can meet your needs with flexible food and drink options catered on-site whilst your guests enjoy one of the best sunset views that Upper Hutt has to offer.

CAPACITY

- 50 people informal standing
- 20 people seated

INCLUDED

- A Venue Manager during your event (for up to 50 people)
- Complimentary wi-fi
- Use of teacups
- [8x] Lounge chairs
- [2x] Coffee tables
- Trestle tables as required
- Rubbish removal

RATES

	Commercial	Community 1	Community 2
Hourly			
— 8am–6pm	\$60	\$45	\$45
— After 4pm	\$80	\$50	\$50
Minimum 2 hours			

Please note: all prices are GST exclusive

■ **Commercial** hire rate is for commercial business and events

Community rates are for community groups or charitable trusts:

■ **Community 1:** ticketed events

■ **Community 2:** non-ticketed, free or by-donation events

Rotary Foyer

CAPACITY: 80–150

Looking for the catered touch for your intimate family celebration or seated dinner? Need a venue with a difference for a special meeting?

Our foyer with its native wooden floors, natural river stones, elegant tiles façade and stunning carving *Te Manawa* by carver David Te Hira will meet the needs of your event.

The foyer is available for corporate evenings and private viewings of our galleries available after 4pm every day and can be hired separately or together with the Theatre, Hall and Creative Classroom.

Our grand piano is available for live music possibilities.

Please note: Fridays and Saturdays are shared evenings with Dough Bakery diners.

HOW THE ROTARY FOYER IS HIRED

The Hall Foyer is hired as a managed/serviced venue. We provide the space, and a Venue Manager who will set up your room for you and pack it down afterwards.

ALCOHOL

Please note clients are required to either apply for a special licence with Upper Hutt District Licensing committee or provide proof of the liquor licence of their caterer to the centre before they will be permitted to serve alcohol on site.

PROUDLY SPONSORED BY UPPER HUTT ROTARY

WHIRINAKI WHARE TAONGA — VENUE HIRE



ROTARY FOYER — 15



CAPACITY

- 80–100 seated theatre style or seated at tables
- 150 standing

INCLUDED

- A Venue Manager during your event (for up to 100 people)
- Complimentary wi-fi
- Use of glasses and teacups
- Rubbish removal
- Includes use of the community kitchenette (oven, microwave, sink etc)
- Trestle tables and chairs as required
- Lectern
- In-built public address system

NOT INCLUDED

- Service staff to serve food, set up tables and chairs, and packing down

AVAILABLE TO HIRE

- Reconfiguration of the stage
- Projector and small pop-up screen
- [50x] black or white tablecloths

RATES

	Commercial	Community 1	Community 2
Hourly From 4pm, minimum 2 hours	\$80	\$50	\$50

Please note: all prices are GST exclusive

■ **Commercial** hire rate is for commercial business and events

Community rates are for community groups or charitable trusts:

■ **Community 1:** ticketed events

■ **Community 2:** non-ticketed, free or by-donation events

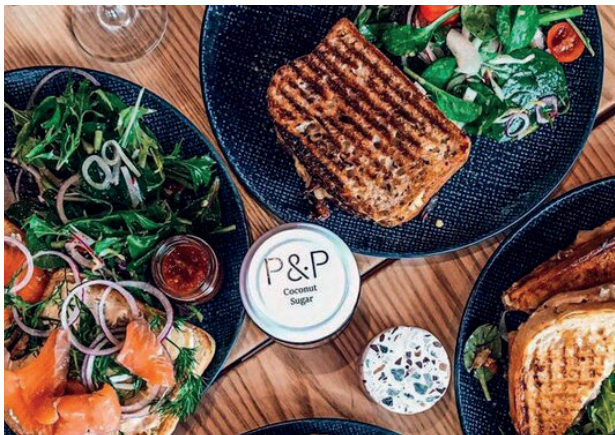
Dough Bakery

To complement the high quality of our venue we are proud to be the home of Dough Bakery.

Talk to Dough to tailor a custom menu for you and your guests. Whether it be a party, wedding or business meeting, Dough can cater for all food and beverage needs. Dough can help you choose suitable wine, beer, cocktails and food to suit any budget.

Email your enquiries to: upperhutt@doughbakery.co.nz

Please note: clients are required to either apply for a special licence with Upper Hutt District Licensing committee or provide proof of the liquor licence of their caterer to the centre before they will be permitted to serve alcohol on site when not using Dough as registered caterer.



Packages



Conference Package

Conferences at Whirinaki offer a mix of function rooms sure to provide you with the perfect space for your next conference.

This package is for a conference across the facility from 8am to 6pm using the Hall with the Creative Classroom theatre as breakout spaces, with multiple configurations available and options for breakout spaces, separate lounges for catering breaks and multiple sessions to run concurrently.

This package includes a Venue Manager during your event for up to 100 people. Events over 100 people will require additional staff (1 staff per 100 people) for fire and evacuation purposes at \$50 an hour per staff member.

— Pack in day (8am–6pm, 10 hours)	\$635
— Event day (whole day/night, 10 hours)	\$635
— Theatre Hire (10 hours)	\$600
— Creative Classroom breakout space	\$900
— Commercial Kitchen hire	\$350
— Hall draping	\$400
— Skip bin hire	\$250
— Pack down cleaning crew	\$550
TOTAL (ex. GST)	\$4,730
DISCOUNTED RATE (ex. GST)	\$4,500



Wedding Package

The large civic hall, artistic foyer entrance and supporting rooms make a beautiful spot for your special day.

This package includes a Venue Manager during your event for up to 100 people. Events over 100 people will require additional staff (1 staff per 100 people) for fire and evacuation purposes at \$50 an hour per staff member. We provide the space, and you provide or arrange everything else: i.e., caterers, audio visual services, tables and chairs etc.

— Pack in day (8am–6pm, 10 hours)	\$500
— Event day (whole day/night, 15 hours)	\$950
— Commercial Kitchen hire	\$350
— Hall draping	\$350
— Skip bin hire	\$200
— Pack down cleaning crew	\$550
TOTAL (ex. GST)	\$3,260
DISCOUNTED RATE (ex. GST)	\$3,000

Tēnā koe!

We look forward to
booking your event soon.



Whirinaki
Whare Taonga