



Whirinaki
Whare Taonga

ARTS | CULTURE | EVENTS

Venue Hire





Contents

Introduction	1
Theatre	3
Recreation Hall	7
Green Room	10
Creative Classroom	11
Recreation Hall Foyer	12
Commercial Kitchen	13
Court	14
Foyer	15
Dough Bakery	17
Packages	19



Introducing Whirinaki Whare Taonga

Whirinaki is an award-winning arts, culture and events centre based in Te Awakairangi ki Uta / Upper Hutt and is a spectacular venue for a memorable daytime or evening event.

With a striking three-level glass facade fronting a magnificent interior space, state of the art sophisticated theatre, large hall, unique meeting rooms and fully equipped commercial kitchen, together with an ever-changing suite of contemporary eye-catching exhibitions, Whirinaki is a sophisticated and inspiring venue for any event.

Host your guests surrounded by spectacular, contemporary New Zealand and international artworks in an architectural space which oozes charm and drama.

Our impressive spaces have been designed to be flexible and are perfect for performances, corporate events, lectures and conferences, cocktail parties, weddings, seated dinners, intimate meetings as well as sporting events, conventions and public expos.



We offer a range of venue hire options at competitive prices – from the intimate spaces of the foyer, to the generous Professionals Recreation Hall and Gillies Group Theatre, to private exhibition viewings. At Whirinaki you can use our on-site caterer Dough Bakery, choose your own caterer, or cater your own event making it flexible for commercial and community events.

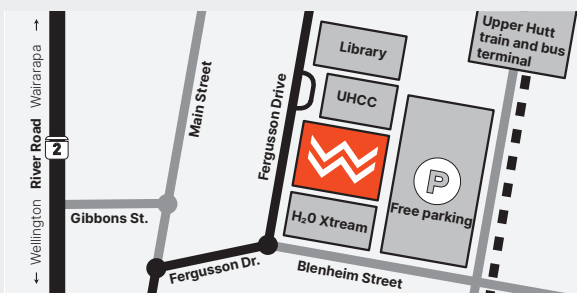
With rail links right on the doorstep direct from Wellington CBD or thirty minutes' drive from the central city and an easy stroll from the region's premiere entertainment precinct Brewtown, Whirinaki is uniquely situated to serve your conferences, expos and social events.

Our dedicated team can support you to make the event the best it can be. Home to the Upper Hutt i-SITE our team are able to provide logistic insights into any transport, accommodation or leisure activities associated with your event.

LOCATION

Whirinaki is situated in the heart of Upper Hutt's Civic and Cultural Precinct, right next door to H2O Xtreme and Upper Hutt City Council buildings.

We are just a short trip from Wellington central at 836 Fergusson Drive, Upper Hutt or a five minute walk from the railway station and on the main bus route.



BOOKING

To enquire about venue availability and arrange a site visit, please call or email.

T 05 527 2168 / 021 328 508

E bookings@whirinakiarts.org.nz

W whirinakiarts.org.nz



Gillies Group Theatre

CAPACITY: 210

Our prestigious theatre allows great flexibility to accommodate everything from theatre performances, dance and ballet showcases, live bands, classical concerts, and seminars to product and programme launches.

Create a dramatic setting, for your awards presentation or gala dinner completed with traditional plush red house curtains or let your guests become the stars of the night by hosting directly on the spacious stage. Talk to us about the theatre for use as a development space for your production, or put the spotlight on keynote speakers at your conferences.

This state-of-the-art theatre can seat an audience of up to 210 in a tiered setting and features a large wooden sprung stage floor. Your booking also comes with the support of fully-fitted backstage changing rooms and green room, as well as access to the Gibbs Court, an indoor-outdoor lobby with the best views over the valley. The Gillies Group Theatre is also home of a Steinway Model D 9ft concert grand piano, one of the few in the country. An intimate space with natural acoustics as well as the latest audio, visual and traditional theatre lighting technology and a skilled team of in-house technicians, this theatre has everything to offer your event, with a touch of glamour.

PROUDLY SPONSORED BY THE GILLIES GROUP

WHIRINAKI WHARE TAONGA — VENUE HIRE





CAPACITY

- 210 seated

STAGE DIMENSIONS

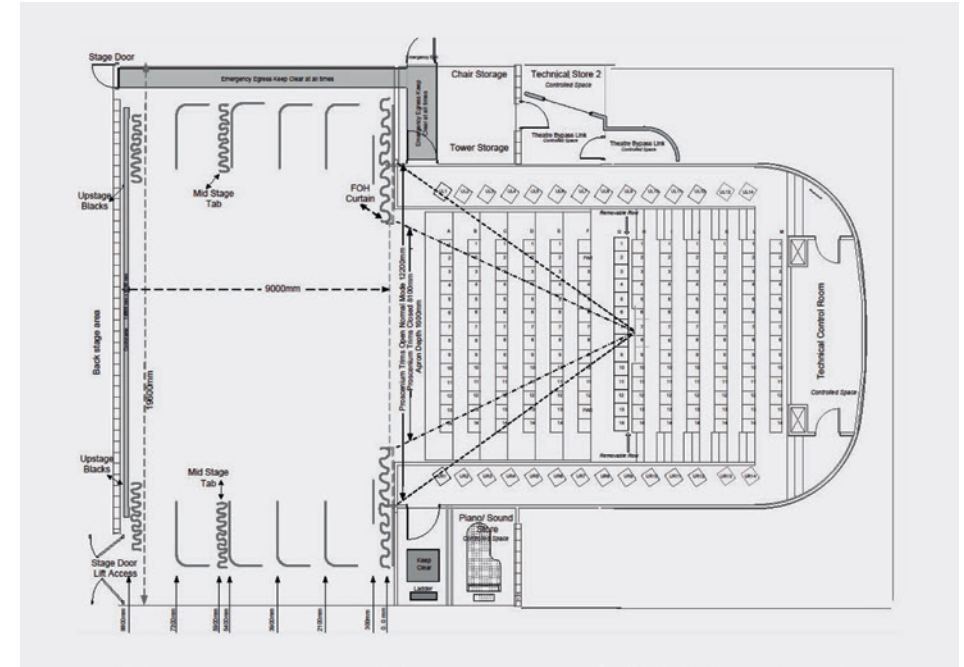
- 19.5m width stage and wings
- 12.3m wide proscenium
- 8.1m closed proscenium
- 11.1m front to rear stage

FACILITIES & EQUIPMENT AVAILABLE

- Freight lift access to the theatre
- Sound loop for the hearing impaired
- Boston upright practice piano
- Stage relay to green room and backstage
- Genie scissor lift
APPROVED OPERATORS ONLY
- Genie single-person lift
AWP400, APPROVED OPERATORS ONLY
- Lectern

(AVAILABLE FOR HIRE)

- Theatre video projector
12000 ANSI LUMEN LASER
- Follow spot
- Smoke machine
- Mirror balls
- Roland vision mixer



Sound & Lighting Equipment

SOUND EQUIPMENT

GENERAL

- [7x] Line array speakers
RCF HDL-20A, 3 FLOWN EACH SIDE OF THE PROS ARCH – INSTALLED WITH ONE SINGLE CABINET WITH SUMMED INPUT FOCUSED AS A LOW LEVEL CENTRE FILL FOR THE FIRST FEW ROWS OF THE THEATRE
- [2x] Active line array with sub enclosures
RCF HDL-19, ONE FLOWN EACH SIDE OF THE PROS ARCH INSTALLED

STAGE SYSTEM

- [6x] Passive co-axial 2-way 12”
TURBOSOUND TFM-122M, 60° H x 40° V, LOW PROFILE
- [3x] Power Amp
LAB GRUPPEN IPD-2400, 1200W @ 4 OHMS, INSTALLED 2 CHANNEL
- [2x] Australian Monitor full range 12”
general stage fold back

MICROPHONES

- [5x] Green band and stand clips
AKG3800
- [3x] Black band and stand clips
AKG3800
- [5x] Shure Beta 58As and stand clips
- [5x] Shure SM57 and stand clips
- [1x] 7-piece Samson drum microphone kit
- [17x] K&M microphone boom stand
MODEL 210/9
- [4x] banquet stands with boom arms

STAGE ACCESSORIES

- [5x] Samson mono DI boxes
- [1x] Samson stereo DI box
- [1x] Utility stereo-input DI box
- [1x] Samson single-channel handheld radio microphone system
- Control room replay
- Stinger software spot player
facilitated on a Power PC Control room only
- Denon Professional CD player
- Tascam MiniDisc player
(NOT INSTALLED, BUT AVAILABLE)
- [2x] Matching Tascam CD media players in single case for side stage use

LIGHTING EQUIPMENT

LIGHTING CONTROL

- Strand 300 Consul (default installed)
- Philips Neo Consul
- Strand Pallet 64 Consul
- Strand Classic Consul

LIGHTING INSTRUMENTS

- [4x] Ellipsoidal spots SOURCE 4, 70°, 750W
- [10x] Profile spots SELECON SPX, 800W
- [32x] Pebble convex SELECON PC, 1200W
- [27x] Fresnels SELECON SF, 1200W
- [18x] Fresnels STRAND 243, 2000W
- [9x] Profile spots SELECON SF 2000
- [15x] Profile spots STRAND SL, 600W, 23°/50°
- [10x] Profile spots STRAND SL, 600W, 15°/32°
- [6x] Gobo kolders
- [120x] Dimmer channels 2kW
- [320x] Patchable production lighting channels distributed theatre wide



Rates

	Commercial	Community 1	Community 2
5-hour session			
— Morning (8am–1pm)	\$385	\$242	\$140
— Afternoon (1pm–6pm)	\$530	\$308	\$280
— Evening (6pm–11pm)	\$550	\$363	\$330
10-hour session			
— Morning start (8am–6pm)	\$825	\$550	\$500
— Afternoon start (1pm–11pm)			
15-hour session			
— Full day/night (8am–11pm)	\$1045	\$704	\$640
Extra hours, after 11pm (per hour)	\$200	\$200	\$200
Pre-event set up day			
— Full day (9am–5pm)	\$175	\$175	\$175
— Extra hours after 5pm (per hour)	\$35	\$35	\$35
<p>■ Community 1: Ticketed community events by charitable trust / not-for-profit groups</p> <p>■ Community 2: Non-ticketed community events by charitable trust / not-for-profit groups</p>			



RATES INFORMATION

- Full use of green rooms and dressing rooms
- Use of standard line array sound system. If speciality rigging/sound is required then pricing is on application
- Technical Operator for 5, 10 or 15 hours and FOH Manager and two ushers for 3 hours
- ■ Commercial hire rates include full use of lighting, except data projector (specialty lighting may incur extra costs)
- ■ Community hire rates include use of a pre-focused and set up standard lighting rig



Professionals Recreation Hall

CAPACITY: 500–750

With all the space you'll need and more, the Professionals Recreation Hall, with its generous 990m² sprung matai floor is the perfect location to cater to those larger events with up to 600 seating capacity.

This huge venue is perfect for community celebrations, weddings, conventions, dances or gala dinners and unique for your special expo or exhibition. Your guests can be welcomed either through the beautiful rear foyer or the main reception foyer and the hall can be themed to your liking. Please ask us for our picks for top notch theming, AV providers, DJs and bands or talk with us about a private viewing of our galleries as part of your event. We would love to work with you on finding the perfect additions to your gathering.

The Professionals Recreation Hall has easy load-in access and is supported by a servery/bar with the option of also booking a fully equipped commercial kitchen and the adjacent Creative Classroom for breakout/support space if required, or the theatre for your keynote speaker.

PROUDLY SPONSORED BY GILLIES & MARK PROFESSIONALS



CAPACITY

- 500 at round tables
- 600 in rowed seating
- 750 standing

DIMENSIONS

- **Hall:** 22.5m × 47.5m (D × W)
- **Stage:** 4.8m × 9.6m × 0.84m (D × W × H)

FACILITIES & EQUIPMENT AVAILABLE

- Movable stage (able to be configured to your size)
- Stage and coloured event lighting
- Public address system (6 zone) for voice announcements with two wireless microphones available
- [600×] plastic stacking chairs
- [40×] trestle tables at 1.6 × 0.6m
- [20×] trestle tables at 2.4 × 0.6m
- Lectern
- Black tablecloths

(AVAILABLE FOR HIRE)

- The option of fully draping the walls of the Recreation Hall with black fabric
- Projector and screen



Rates

	Commercial	Community 1	Community 2
5-hour session			
— Morning (8am–1pm)	\$300	\$240	\$180
— Afternoon (1pm–6pm)	\$350	\$280	\$210
— Evening (6pm–11pm)	\$400	\$320	\$240
10-hour session			
— Morning start (8am–6pm)	\$575	\$460	\$345
— Afternoon start (1pm–11pm)	\$600	\$480	\$360
15-hour session			
— Full day (8am–11pm)	\$950	\$760	\$570
Hourly (two hour minimum)	\$55	\$44	\$33
Staffing			
— After hours staffing (total)	\$200	\$200	\$200
— Security guards, Recon Security (hourly)	\$40	\$40	\$40
— Sound or lighting technicians (hourly)	\$40	\$40	\$40
— Pack down cleaning crew (hourly)	\$550	\$550	\$550
COMPULSORY FOR LARGE CATERED EVENTS			
Extras			
— Hall draping (optional)	\$400	\$400	\$400
— Skip bin (small), Abbots Bin Hire	\$250	\$250	\$250
— Wheelie bins / recycling 240L, Low Cost Bins	\$25	\$25	\$25
<p>■ Community 1: Ticketed community events by charitable trust / not-for-profit groups</p> <p>■ Community 2: Non-ticketed community events by charitable trust / not-for-profit groups</p>			



RATES INFORMATION

- Includes use of the Recreation Hall Foyer and bar/servery
- Includes Venue Manager for up to 100 people
- Events over 100 people will require additional staff for fire and evacuation purposes at \$35 an hour
- Must be evacuated by 11pm and be left clean and tidy. Additional time past 11pm will be charged at \$200 per hour.
- Please note all prices are GST exclusive

Green Room

CAPACITY: 20–50

The Green Room is a self-contained workshop space bookable for short or full day meetings, workshops and break-out activities.

This space seats 20 to 30 people around the board room table and has views of the hills of Upper Hutt. Please note this area is up several flights of stairs and is not wheelchair accessible.

CAPACITY

- 20–30 seated
- 50 people informal standing

FACILITIES & EQUIPMENT AVAILABLE

- Boardroom table and chairs
- Trestle tables as required
- Whiteboard
- Kitchenette facilities, including hot water and fridge
- Glass and tea cups available for hire
- Projector available for hire

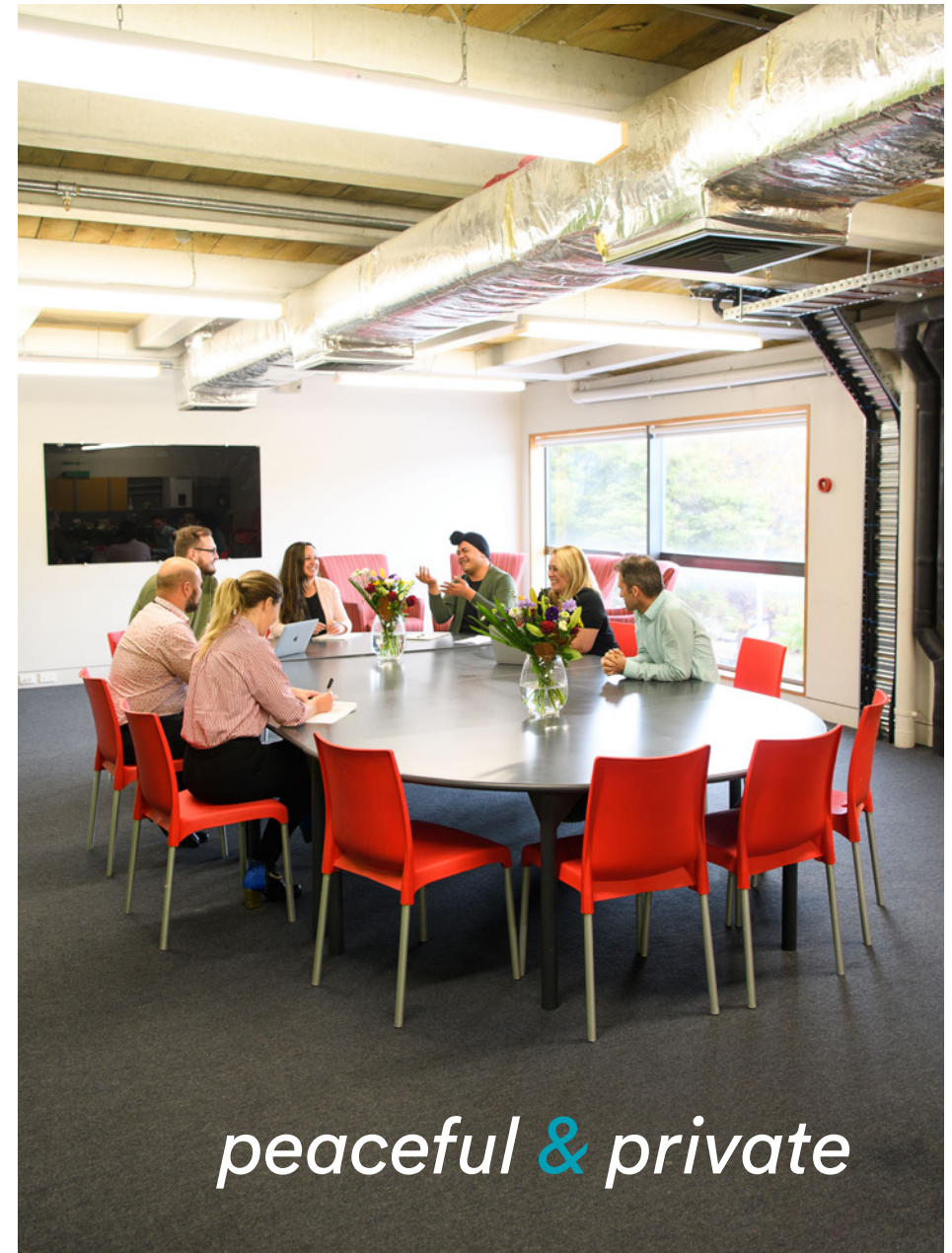
RATES

	Commercial	Community 1	Community 2
Hourly 8am–4pm, minimum 2 hours	\$45	\$36	\$27
Full-day rate	\$160	\$130	\$130

Please note all prices are GST exclusive

■ **Community 1:** Ticketed community events by charitable trust / not-for-profit groups

■ **Community 2:** Non-ticketed community events by charitable trust / not-for-profit groups





Creative Classroom

CAPACITY: 50

The Creative Classroom is a multipurpose, intimate meeting space.

It is available weekdays after 4pm, anytime in the school holidays, weekends and evenings. This space seats 30 to 40 people comfortably and is equipped with adjustable tables and chairs. This light and airy space features an integrated indoor and outdoor space and entrance and includes use of the Recreation Hall Foyer and the servery/bar. We can design our creative classroom around your meeting catering for 15 to 50 guests – with multiple configurations available. Combine your workshop or function with a tour through our galleries to create that unique event.

CAPACITY

- 50 people informal standing
- 40 seated

FACILITIES & EQUIPMENT AVAILABLE

- Classroom style tables and chairs
- Servery/bar facilities, including hot water and fridge
- Glass and tea cups available for hire
- Projector available for hire

RATES

	Commercial	Community 1	Community 2
Hourly Minimum 2 hours, After 4pm weekdays, anytime weekends and school holidays	\$50	\$40	\$40

Please note all prices are GST exclusive

■ **Community 1:** Ticketed community events by charitable trust / not-for-profit groups

■ **Community 2:** Non-ticketed community events by charitable trust / not-for-profit groups

Professionals Recreation Hall Foyer

CAPACITY: 50

The Professionals Recreation Hall Foyer is a beautiful modern meeting space, featuring classy red tiles and polished concrete floors.

Available weekdays after 4pm, any time in the school holidays, weekends and evenings, this space houses 50 people comfortably and is perfect for drinks and nibbles and intimate functions.

CAPACITY

- 50 people informal standing

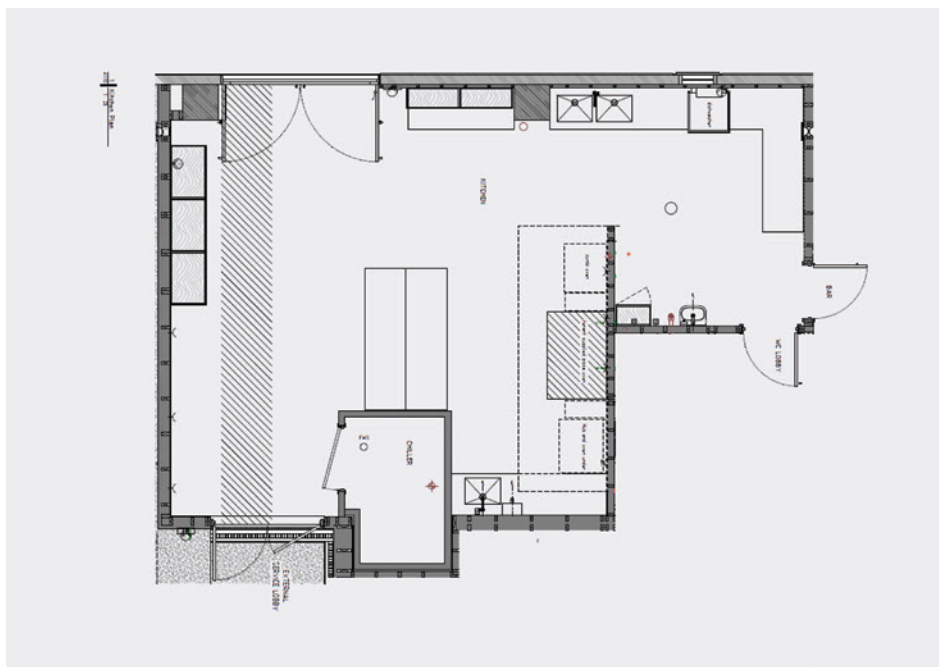
FACILITIES & EQUIPMENT AVAILABLE

- Facilities and equipment available
- Servery/bar facilities, including hot water and fridge
- Glass-door chiller, single door
SKOPE TME650-A, 745 x 740 x (INCL. HANDLE) x 2200mm (D x W x H)
- Under-counter bar fridge
FOUR SWING DOORS, SKOPE BB780X 590 x 2620 x 920mm (D x W x H)
- Trestle tables and chairs on request
- Lectern
- Glass and tea cups available for hire

RATES

	Commercial	Community 1	Community 2
Hourly, daytime Minimum 2 hours, After 4pm weekdays, anytime weekends and school holidays	\$50	\$40	\$30
Evening session 6pm–11pm, (5 hours)	\$300	\$250	\$200
Includes Venue Manager for up to 50 people Please note all prices are GST exclusive ■ Community 1: Ticketed community events by charitable trust / not-for-profit groups ■ Community 2: Non-ticketed community events by charitable trust / not-for-profit groups			





Commercial Kitchen

Our commercial kitchen features all the equipment you will need to cater your event.

Available for hire by caterers and hirers alike.

FACILITIES & EQUIPMENT AVAILABLE

- Passthrough dishwasher STARLINE M2C
- Tray digital/electric combi oven
TURBOFAN EC40D10 & SK40-10A FULL SIZE 10
- Gas range convection oven,
with cooktop
BLUE SEAL G56D, 812 x 900 x 915mm (D x W x H)
- Walk-in chiller
- [2x] stainless steel prep bench,
with shelf below
700 x 2400 x 900mm (D x W x H)

RATES

	Commercial	Community 1	Community 2
Flat rate	\$350	\$280	\$210

Please note all prices are GST exclusive

■ **Community 1:** Ticketed community events
by charitable trust / not-for-profit groups

■ **Community 2:** Non-ticketed community
events by charitable trust / not-for-profit groups



Gibbs Court

CAPACITY: 20–50

Our beautiful open air courtyard, on the first floor, provides one of the best views in Upper Hutt

Perfect for your summer evening rooftop experiences, social functions, meetings and work dos. This space has an intimate indoor area and large covered outdoor area crating fabulous indoor and outdoor flow. Our licensed café can meet your needs with flexible food and drink options catered onsite whilst your guests enjoy one of the best sunset views that Upper Hutt has to offer.

CAPACITY

- 50 people informal standing
- 20 people seated

FACILITIES & EQUIPMENT AVAILABLE

- Facilities and equipment available
- Lounge chairs and coffee tables
- Trestle tables as required
- Glass and tea cup available for hire
- Projector available for hire

RATES

	Commercial	Community 1	Community 2
Hourly Minimum 2 hours	\$87.50	\$50	\$50
5-hour session	\$350	\$350	\$250

Includes Venue Manager for up to 50 people

Please note all prices are GST exclusive

■ **Community 1:** Ticketed community events by charitable trust / not-for-profit groups

■ **Community 2:** Non-ticketed community events by charitable trust / not-for-profit groups

Rotary Foyer

CAPACITY: 80–150

Looking for the catered touch for your intimate family celebration or seated dinner? Need a venue with a difference for a special meeting?

Our foyer with its native wooden floors, natural river stones, elegant tiles facade and stunning carving *Te Manawa* by carver David Te Hira will meet the needs of your event.

The foyer is available for corporate evenings and private viewings of our galleries available after 4pm every day and can be hired separately or together with the Theatre, Hall and Creative Classroom.

Our grand piano is available for live music possibilities.

Please note: Fridays and Saturdays are shared evenings with Dough Bakery diners.

PROUDLY SPONSORED BY UPPER HUTT ROTARY





CAPACITY

- 80–100 seated theatre style or seated at tables
- 150 standing

FACILITIES & EQUIPMENT AVAILABLE

- Includes use of the community kitchenette (oven, microwave, sink, etc)
- Lounge chairs and coffee tables
- Trestle tables and chairs as required
- Lecturn
- Glass and tea cup available for hire
- Projector available for hire
- Sound system available for hire, with technician or in-built public address system

RATES

	Commercial	Community 1	Community 2
Hourly From 4pm, minimum 2 hours	\$87.50	\$50	\$50
5-hour session, evening 6–11pm	\$350	\$350	\$250
Includes Venue Manager for up to 100 people Please note all prices are GST exclusive			
■ Community 1: Ticketed community events by charitable trust / not-for-profit groups			
■ Community 2: Non-ticketed community events by charitable trust / not-for-profit groups			

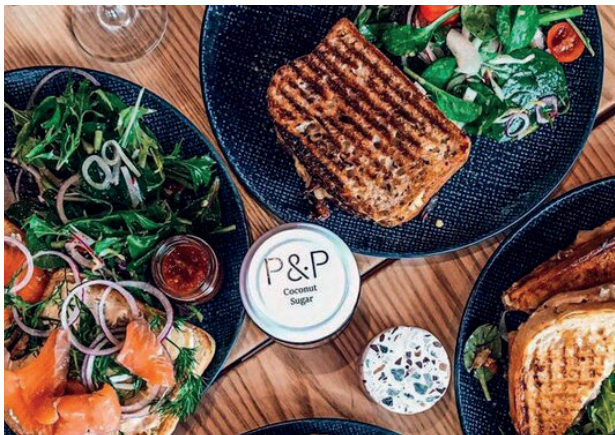
Dough Bakery

To complement the high quality of our venue we are proud to be the home of Dough Bakery.

Talk to Dough to tailor a custom menu for you and your guests. Whether it be a party, wedding or business meeting, Dough can cater for all food and beverage needs. Dough can help you choose suitable wine, beer, cocktails and food to suit any budget.

Email your enquiries to: info@doughbakery.co.nz

Please note: clients are required to either apply for a special licence with Upper Hutt District Licensing committee or provide proof of the liquor licence of their caterer to the centre before they will be permitted to serve alcohol on site when not using Dough as registered caterer.



Packages



Arty Christmas Party

Looking for a Christmas party with an art and culture theme?

Let us help you celebrate this Christmas with a special event of up to 50 people any time after 4pm. We'd love to assist you in organising a memorable celebration for your team or clients.

Say 'Merry Christmas and a Happy New Year' with an artistic Christmas function in one of our spaces: the Creative Classroom, Rotary Foyer or Gibbs Court together with a private tour of our gallery spaces.

The Arty Christmas Party at Whirinaki is the way to celebrate the festive season with art and culture added into the mix.

Event day, incl. use of the servery/bar	\$300
Creative Classroom or Gibbs Court and Foyer	
Commercial Kitchen hire	\$350
Private gallery tour	\$100
Glass and tea cup hire	\$100
TOTAL (ex. GST)	\$850



Art is Love Wedding Package

Art is love, and the wedding package at Whirinaki reflects this.

The large civic hall, artistic foyer entrance and supporting rooms make a beautiful spot for your special day. This package includes hall draping, hire of the commercial kitchen and a cleaning and pack-down service, for wedding parties to leave stress-free at the end of their events. Please enquire about the use of the theatre for your ceremony if you prefer and/or a private tour of our gallery spaces.

— Pack in day (8am–6pm, 10 hours)	\$500
— Event day (whole day/night, 15 hours)	\$950
— Commercial Kitchen hire	\$350
— Hall draping	\$350
— Skip bin hire	\$200
— Additional Staffing	\$100
— Security	\$200
— Pack down cleaning crew	\$550
— Deposit	\$250
TOTAL (ex. GST)	\$3500

Packages



Conference Package

Conferences at Whirinaki offer a mix of function rooms sure to provide you with the perfect space for your next conference.

This package is for a conference across the facility from 8am to 6pm using the Hall with the Creative Classroom theatre as breakout spaces, with multiple configurations available and options for breakout spaces, separate lounges for catering breaks and multiple sessions to run concurrently.

— Pack in day (8am–6pm, 10 hours)	\$500
— Event day (whole day/night, 10 hours)	\$575
— Theatre Hire	\$825
— Creative Classroom breakout space	\$350
— Commercial Kitchen hire	\$350
— Hall draping	\$350
— Skip bin hire	\$250
— Security	\$200
— Pack down cleaning crew	\$550
— Deposit	\$250
TOTAL (ex. GST)	\$3500



Tēnā koe!

We look forward to
booking your event soon.



Whirinaki
Whare Taonga