

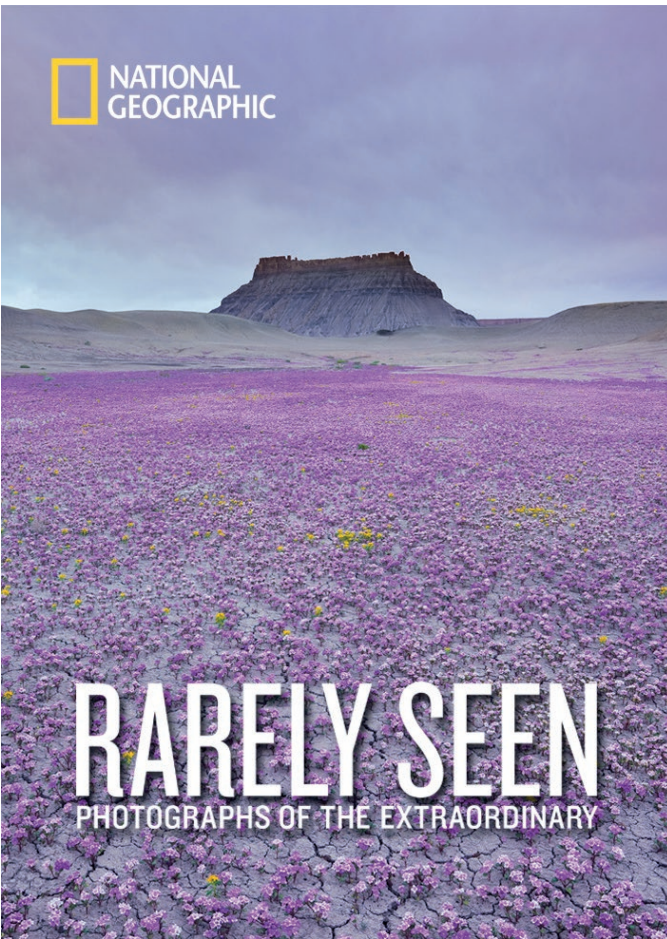
EXPRESSIONS

Whirinaki



JANUARY – JUNE 2021

EXHIBITIONS

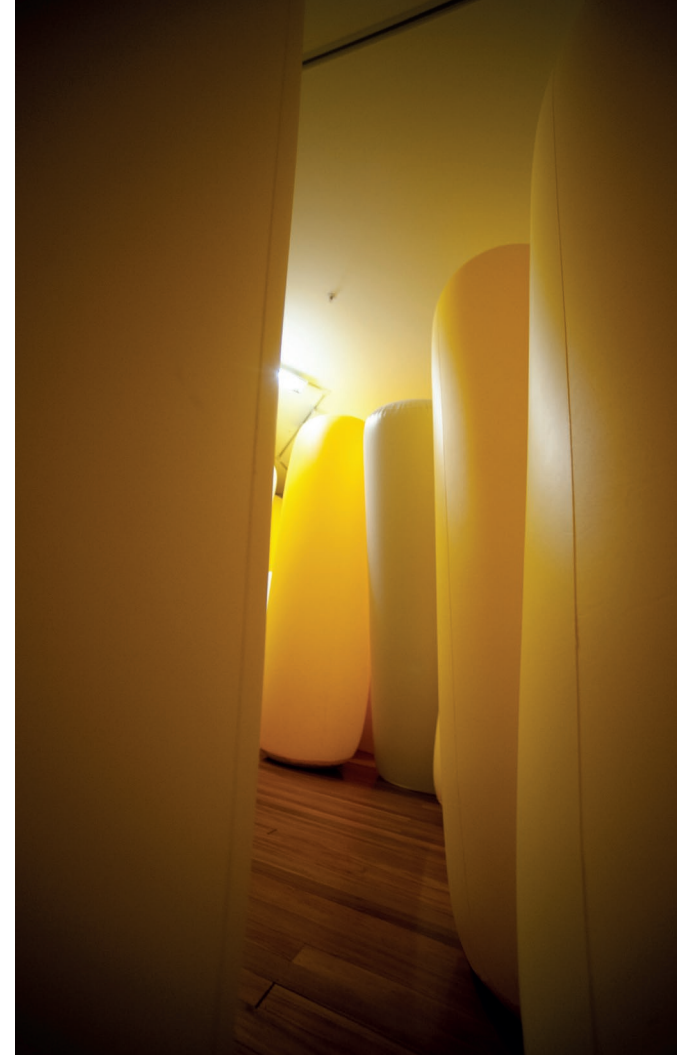


RARELY SEEN: PHOTOGRAPHS OF THE EXTRAORDINARY 6 FEBRUARY – 2 MAY

Shot by some of the world's finest photographers, Rarely Seen features striking images of places, events, natural phenomena, and man-made heirlooms seldom seen by human eyes. From the Peruvian Andes to the deepest caves of Papua New Guinea, to the Pope taking a selfie in Vatican City, this exhibition of visual wonders by National Geographic reveals a world very few have the chance to see for themselves.

It's all here: a green-crowned brilliant hummingbird looking eye to eye with a pit viper, the Rayong Dam, an underwater park in Austria, ice caves, a supercell storm cloud, and fireflies in North Carolina. This exhibition captures once-in-a-lifetime moments, natural wonders, and rarely seen objects from across the globe.

Entry by donation
Image credit: Purple Haze; Utah by Guy Tal
Proudly supported by The Lion Foundation and Heretaunga Rotary



PERIPHERY 20 FEBRUARY – 11 APRIL

Seung Yul Oh's interactive sculpture Periphery, brings his playfulness to the gallery. This large inflatable installation, on loan from the Dunedin Public Art Gallery, is an environment to be walked through and to be experienced... from the inside out.

Light hearted and serious, Seung Yul Oh tests relationships between audiences and artworks, artworks and spaces, blurring the boundary between spectacle and participation, between passive and active engagement.

Image credit: Periphery by Seung Yul Oh
Collection of the Dunedin Public Art Gallery



THE MOON 8 MAY – 4 JULY

The Moon is an installation of lunar imagery, moonlight and surround sound by UK artist Luke Jerram. Featuring 120dpi detailed NASA imagery of the lunar surface at an approximate scale of 1:500,000, each centimetre of the internally lit spherical sculpture represents 5km of the moon's surface.

This traveling artwork has been presented in a number of different ways both indoors and outdoors, so altering the experience and interpretation of the artwork.

Image credit: The Moon, by Luke Jerram
Toured by Nelson Provincial Museum

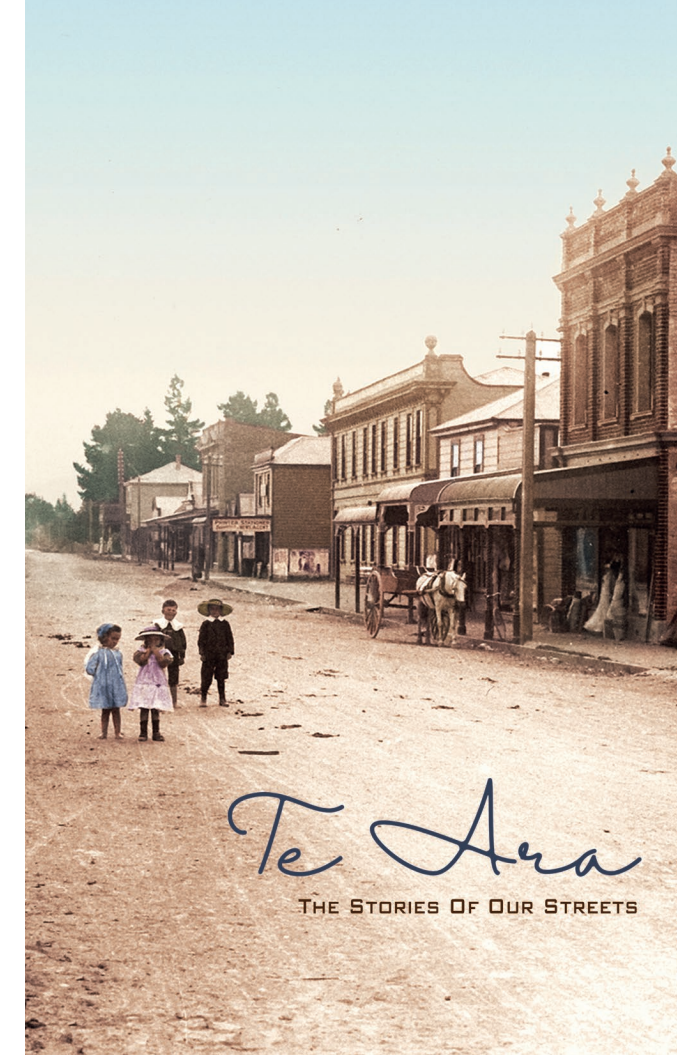


SARA HUGHES 17 APRIL – 27 JUNE

An interactive installation created by Auckland artist Sara Hughes based on the idea of the building block: it's an artwork you can build with.

Especially popular with families, visitors can build their own cityscape using hundreds of wooden blocks which are modelled on the local architecture and landscape. Focussed on experimenting with colour, composition, shape and pattern this is a site specific work celebrating the city of Upper Hutt.

Image credit: Heretaunga, by Sara Hughes



TE ARA: THE STORIES OF OUR STREETS 15 MAY – 23 JANUARY 2022

Explore the significant stories behind the streets of Upper Hutt, our people and places, our meetings and memories, told and untold. From the first meetings of Māori and early settlers to today; these are the stories that our city is built on.

This exhibition is in the newly built Gillies Gallery and is the city's first major historical exhibition. Through an exploration of the streets of Upper Hutt, past and present, you will hear insights into the historic sites and buildings of Upper Hutt, yarns from local characters and their dramas, legends of our local iwi, and the fascinating secrets hidden under the pavements of our city.

Stand on the street where you live. Discover what has happened over time on that very spot. Embark on a journey through time and experience an Upper Hutt you never have before.

Image credit: Main Street, c1900, Colourising the Hutt, Original. Alexander Turnbull Library.
Proudly supported by Lotteries Tuia – Encounters 250



FLOWERS AND PEOPLE – GOLD 15 MAY – 5 SEPTEMBER

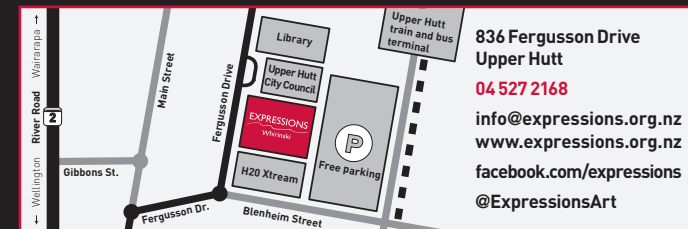
Flowers and People – Gold is an interactive work by Japanese based Team Lab. The work is based on the theme of the seasons, often reflected in Japanese art and important in Japanese culture, and was inspired by a visit to Kunisaki Peninsula in the spring, a time when cherry blossoms were in abundance around the mountains.

This animated installation work shows flowers that gradually bud, blossom and grow, before their petals begin to wither and eventually fade away. Depending on the proximity of the viewer to the work, the flowers shed their petals all at once, or come to life and blossom once again.

TeamLab (Tokyo) is a co-operative, interdisciplinary group of professionals, headed by Toshiyuki Inoko, who refer to themselves as 'Ultra-technologists'.

Image credit: Flowers and People – Gold, Team Lab
Proudly supported by Asia Foundation New Zealand

INFORMATION



9am – 4pm, seven days a week

One hour prior to performance on show nights

BOOKING TICKETS: to book tickets, either pop in to Expressions Whirinaki, call 04 527 2168, or book online at www.expressions.org.nz. Booking fees online apply.

VENUE HIRE: whether you're holding a conference, a public meeting, a wedding, providing corporate training, hosting a business dinner or giving a presentation, Expressions Whirinaki can meet your needs. Ask us how we can help you host a memorable event.

Enquiries to 04 527 2168 or info@expressions.org.nz

Upper Hutt i-SITE Visitor Information Centre:

Looking for something to do? Come and see us first for all of your travel bookings, Snapper card supplies and accommodation needs.

EAT & DRINK: Dough Café is open every day. Monday & Tuesday: 7am to 5pm Wednesday to Friday: 7am to 8.30pm Saturday: 8am to 8.30pm Sunday: 8am to 5pm

SHOP: 'iti' is open every day 9am – 4pm for the very best New Zealand made art, design and gifts. You can also shop online at www.expressions.org.nz

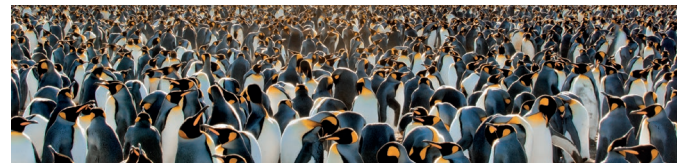
FREE Wifi and Reading Area: Wifi is available throughout the building with a reading area in Gibbs Court.

ANNUAL PARTNERS



Information is correct at time of printing, but may be subject to change, including late additions, cancellations, and booked-out sessions.

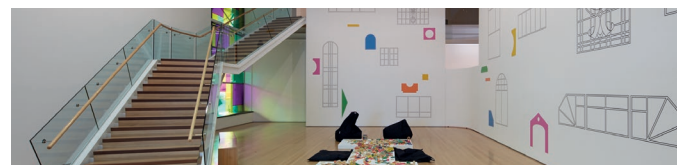
PUBLIC PROGRAMMES



NATIONAL GEOGRAPHIC SPEAKER

DATE TO BE ADVISED • 1PM • \$5 • BOOKING REQUIRED

Join Schannel van Dijken, a National Geographic Explorer and a Marine Program Director for Conservation International-Asia-Pacific Field Program, as he talks about his National Geographic adventures as a Marine biologist, Polynesian voyaging explorer, community oriented conservationist, dive master, researcher, educator, and waterman.



ARTIST TALK AND TOUR: SARA HUGHES

SUNDAY 17 APRIL • 1PM • FREE • NO BOOKING REQUIRED

Hear from artist Sara Hughes about her work and other contemporary artworks.

HERITAGE WALKING TOUR

EVERY SUNDAY IN JUNE • 3-5PM • FREE • NO BOOKING REQUIRED

A guided walking tour featuring the historic sites and buildings of Upper Hutt. This 1.5 km walking tour will take you through the historic areas and stories of our city, its personalities and its drama.

Presented by the Upper Hutt iSITE Visitor Information Centre



MOON AND MINDFULNESS YOGA

EVERY THURSDAY DURING MAY • 12-1PM • FREE • NO BOOKING REQUIRED

Join us under UK artist Luke Jerram's, The Moon for Yoga classes with a difference. The large moon artwork will be the centrepiece of an exciting programme of Yoga where a qualified instructor will guide you through a series of movements and poses that connect to the Moon hanging above.

ACTIVITIES FOR CHILDREN



LITTLE EXPRESSIONS: ART FOR LITTLE PEOPLE

TUESDAY'S DURING TERM THREE & FOUR • 9.15 – 10AM
\$35 PER TERM FOR MATERIALS

Weekly art sessions for little people aged 2.5-4 years old. 45 minutes of discovery and fun, with something new every week! Places are limited so bookings are essential and parent/caregiver supervision is required.



CREATE A CITY

SUNDAY 21 APRIL • 1-3PM • SUITABLE FOR 5 YEARS & OVER
FREE • NO BOOKING REQUIRED

These April school holidays be inspired by Sara Hughes's artwork Heretaunga and create your own miniature building to take home.

MATARIKI MOON WATCHING

17 JUNE & 18 JULY • 3.30 TO 5.30PM • SUITABLE FOR ALL AGES
FREE • BOOKING ESSENTIAL

Explore the Te Papa Giant Star Dome during Matariki. Experience the night sky alongside Luke Jerram's moon artwork and learn how to spot constellations in Aotearoa's night sky.



LOST LETTER OFFICE

SATURDAY 13 FEBRUARY • 10AM • SUITABLE FOR AGES 2 YEARS AND OVER
\$10 PER TICKET • BOOKINGS ESSENTIAL

A young girl has just moved into the neighbourhood and a retired magician is back from her world travels. Each alone in their homes, with a longing to write and connect with someone—their letters go on an adventurous journey.

Presented by Expressions Whirinaki Arts & Entertainment Centre in association with Capital E National Theatre for Children

THEATRE & DANCE AT EXPRESSIONS

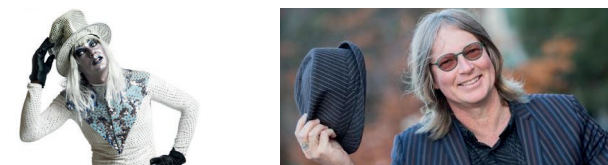


MY SECRET LIFE: IAN SINCLAIR

MONDAY 22 MARCH • 8PM • \$20 PER TICKET • \$18 FRIENDS CONCESSION
BOOKINGS ESSENTIAL

Well-known TVNZ Journalist Ian Sinclair shares his secret talent for playing flamenco guitar in my secret life. Many will know Ian Sinclair as a roving reporter with the dream TV job. Yet few would guess that he had a lifelong secret addiction to Spanish flamenco guitar.

Presented by Expressions Whirinaki Arts & Entertainment Centre in association with Arts on Tour



DAVID BOWIE AND THE ART OF BEING DIFFERENT

TUESDAY 15 JUNE • 8PM • \$20 PER TICKET • \$18 FRIENDS CONCESSION
BOOKINGS ESSENTIAL

In this sparkling interactive performance Dr Ian Chapman and his Cosmic Jive Trio unravels the extraordinary marriage of sound and visual effect that lies at the heart of the work of David Bowie.

Presented by Expressions Whirinaki Arts & Entertainment Centre in association with Arts on Tour

APERTURE – THE LIFE AND WORK OF ANS WESTRA

FRIDAY 16 JULY • 8PM • \$20 PER TICKET • \$18 FRIENDS CONCESSION
BOOKINGS ESSENTIAL

A creative and innovative play about Ans Westra, a NZ Arts Foundation Icon photographer. In 1957, Ans Westra emigrated from the Netherlands to New Zealand and began to take photos.

Presented by Expressions Whirinaki Arts & Entertainment Centre in association with Arts on Tour



WELLINGTON UKULELE FESTIVAL

SUNDAY 14 FEBRUARY • 10 AM - 7.30 PM • \$25.00 EARLY BIRD TICKETS • \$35.00
BOOKINGS ESSENTIAL

A day to play, learn, and have fun with the ukulele, ending with The Shenanigans band in concert.

Presented by Mainly Acoustic Music Club with support from Upper Hutt City Council

CLASSICAL EXPRESSIONS 2021

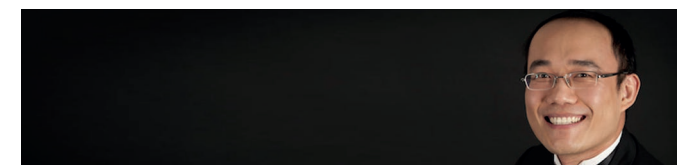


TRIO ÉLAN

MONDAY 12 APRIL • 7.30 PM

Trio Élan is an electrifying new ensemble made up of three of New Zealand's leading chamber musicians: violinist Donald Armstrong, saxophonist Simon Brew and pianist Sarah Watkins. In a rare and exclusive programme which showcases the dynamic and seductive sounds of three wildly different instruments.

Presented in association with Chamber Music New Zealand



JIAN LIU

MONDAY 21 JUNE

Jian Liu has been gaining a reputation as a well sought-after solo pianist, chamber musician, and educator across the globe. He has performed as a soloist and chamber musician throughout Europe, Asia, and North America.



LES VOISIN FRENCH BAROQUE

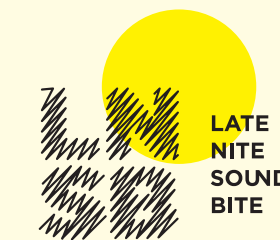
MONDAY 16 AUGUST

A classical trio, traversing the music of France from French Baroque, through the vibrant colours of impressionism, to the swinging jazz Hot Club de France. Les Voisin is a coming together of worlds, featuring Violinist Justine Cormack, Cellist James Bush and Spanish Theorbo player Juan Carlos de Mulder.

Presented in association with Chamber Music New Zealand (logo)

\$35 ADULT • \$30 CONCESSION (FRIENDS/PIANO CLUB/UPPER HUTT MUSIC SOC.)

Classical Expressions is brought to you by Expressions Whirinaki Arts & Entertainment Centre.



LATE NITE SOUND BITE LAST THURSDAY OF THE MONTH

7-9PM • KOHA ENTRY

Late Nite Sound Bite is a once a month late night opening on the last Thursday of the month with fresh NZ music and all galleries, café and shop open until 9pm. Entry is by Koha and it is casual/family friendly.

25 MARCH: Ain't Superstitions - Soul

29 APRIL: Pip Payne - Honky Tonk

25 JUNE: Stoop Duo - Guitar and Piano duo

Late Nite Sound Bite is brought to you by Expressions Whirinaki Arts & Entertainment Centre

EXPRESSIONS LIVE!

A series of lunchtime concerts given by performance students from Te Kōki New Zealand School of Music. 1PM • Entry by donation

Tuesday 23 March STRINGS

Tuesday 10 August STRINGS

Tuesday 20 April WIND & BRASS

Tuesday 7 September PIANO

Tuesday 18 May PIANO

Tuesday 5 October VOICE

Tuesday 20 July VOICE

Expressions Live! is brought to you by Expressions Arts & Entertainment Centre, The Upper Hutt Concert Grand Piano Trust, and Te Kōki New Zealand School of Music at Victoria University of New Zealand.



SUNDAY STRUM

Join us on the first Sunday of every month for a ukulele jam.

You can listen or join in, use one of our ukes or bring your own. Beginners to advanced players, ages 5 to 95, all welcome.

7 Feb, 7 Mar, 4 Apr, 9 May, 6 Jun, 2-3pm in the Rotary Foyer

Dough Bakery

Open for dinner & drinks Wednesday – Saturday nights

Coffee • Breakfast • Lunch • Dinner

Beer • Wine • Cocktails
Freshly baked goods

Expressions-Whirinaki
836 Fergusson Drive, Upper Hutt

See menu and book online:
doughbakery.co.nz